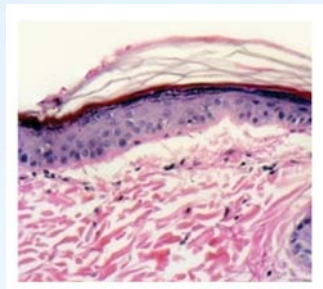


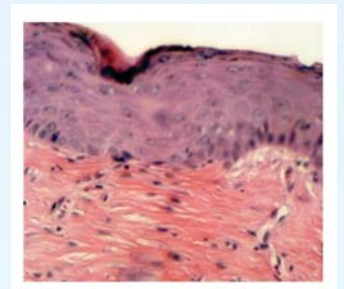
Introducing DermaFuze™

An advanced
anti-aging peptide
treatment breakthrough.

DermaFuze™ peptide infusion treatments stimulate the body's own cellular repair system to produce new skin cells, collagen and elastin, reducing the signs of aging caused by photo-damaged skin.



Before - Control
Murine Model H & E Stain, 420X



After - 2 weeks post treatment
Enhanced Epidermal Thickening
Enhanced Dermal Matrix Density

The results? In a recent double blind study, after just two treatments patients experienced a 42.6% increase in epidermal thickness and a 21.7% increase in dermal thickness.

* See back for summary of study results presented at IMCAS 2009.

Contact us today to find out how you can deliver these same results while increasing your bottom line.

www.DERMAFUZE.com



Genesis
Biosystems
Innovations in Regeneration

1500 Eagle Court
Lewisville, Texas 75057
(888) 577-7335
www.genesisbiosystems.com

Increased Epidermal and Dermal thickness induced in human skin by a combination of Microdermabrasion, Peptide Infusion (myristoyl pentapeptide-17) and a topical skincare range containing peptide and retinol.

Dr. Hilary Allan, Dr. Mervyn Patterson, Dr. Stephen Young

Introduction

As we age, epidermal and dermal thinning contributes to the appearance of wrinkles and skin laxity. Treating this thinning process with office-based procedures and topical skincare is of great interest to the aesthetic practitioner and their patients.

The Accelafuze™ is a novel treatment platform which combines crystal free microdermabrasion, growth peptide infusion and light emitting diode (LED) therapy within one procedure. Initial studies have shown this treatment is effective in removing the stratum corneum and aiding penetration of a peptide infusion into the dermis⁽¹⁾. The peptide infusion and the topical skincare product (Dermacel®) both contain myristoyl pentapeptide-17 combined with amino acids, micronutrients and essential trace elements. The infusion solution and skincare line underwent Human Cell Culture and Mattek DNA Microanalysis to demonstrate in vitro safety and efficacy⁽²⁾. A study involving human skin biopsies demonstrated an increase in epidermal thickness and an increase in the amount of collagen fibres present at the dermal-epidermal junction after two weeks of application of the skincare product⁽³⁾.

Materials and Method

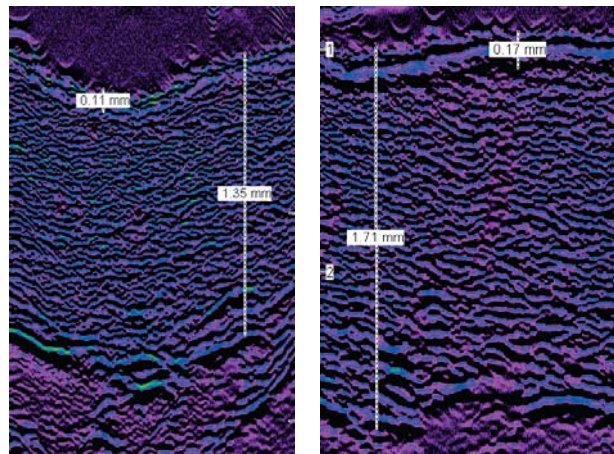
This study used 30 MHz ultrasound images of the décolletage area of human volunteers to access the effectiveness of two Accelafuze™ treatments combined with six weeks of topical skincare applied daily.

Group A (n= 13) Patients received two Accelafuze™ treatments on day 1 and day 14. They applied Dermacel® SPF 30 daily each morning throughout the study period. Ultrasound scans measuring epidermal and dermal thickness were performed at the start of the study and after six weeks.

Group B (n= 15) Patients received two Accelafuze™ treatments on day 1 and day 14. They applied Dermacel® Daily Peptide Replacement twice a day, Dermacel® Retinol Complex at night and Dermacel® SPF 30 each morning throughout the study period. Ultrasound scans were performed at the start of the study and after six weeks.

An Accelafuze™ treatment consisted of three passes of crystal free microdermabrasion followed by peptide infusion and then five minutes of yellow light LED therapy (590 nm).

Results



30 MHz ultrasound images of the décolletage area of a 39 yr-old, demonstrating the increase in epidermal and dermal thickness after two Accelafuze™ treatments and six weeks of Dermacel® Peptide Replacement, Retinol Complex and SPF 30 applied daily per the treatment protocol.

Patient Group	%mean increase in epidermal thickness	P value	% mean increase in dermal thickness	P value
A	23.3%	P=.005*	7.2%	P=.055
B	42.6%	P=.001*	21.7 %	P=.001*

Note:

1. No adverse events were recorded in either of the two treated groups.
2. The ultrasound scans were performed by an independent investigator blinded to the treatments performed.

Discussion

Performing two Accelafuze™ treatments with application of SPF 30 daily resulted in a mean increase in epidermal thickness of 23.3% and dermal thickness of 7.2%.

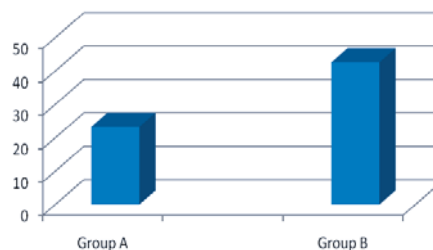
Performing two Accelafuze™ treatments with application of Dermacel® Daily Peptide Replacement, followed by Dermacel® Retinol Complex and SPF 30 daily produced a 42.6% increase in epidermal thickness as well as a 21.7% increase in the dermal thickness.

The increase in both the epidermal and dermal thicknesses proved highly statistically significant in those treated with a combination of Accelafuze™ procedures and the topical peptide skincare applied on a daily basis per the treatment protocol.

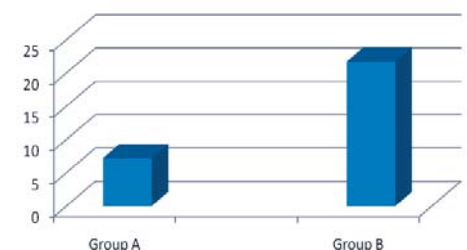
Results obtained indicate the treatment consisting of a combination of Accelafuze™ procedures and daily application of Dermacel® skin care products containing the referenced pentapeptide active ingredient may provide positive results in treating the epidermal and dermal thinning that occurs with the ageing process.

Please direct correspondence to:
Dr. Mervyn Patterson
141 Main Road, Danbury
Essex, UK. CM3 4AA
This study was self funded.

Graph showing mean % change in Epidermal thickness



Graph showing mean % change in Dermal thickness



References

1. High resolution ultrasound investigation showing effects of Accelafuze™ procedure and Dermacel® Healing Peptide Repair skincare on skin. 2008 study held on file, Genesis Biosystems, Inc.
2. Human Cell Culture Studies / Mattek DNA Microassay studies. 2008 study held on file, Biosyn, Inc.
3. Histological examination of Human Skin following two weeks of application of Dermacel® Peptide / Retinol Complex. Data held on file 2008 Genesis Biosystems, Inc.